

ND-Y Series (6Y, 2Y)

HDI General-Purpose Drilling Machine for PCBs

The global-standard drilling machine
for the age of high precision & multi layer



model : ND-6Y220E

Via Mechanics, Ltd.

ND-6Y220E, 2Y220E

HDI General-Purpose
Drilling Machine for PCBs

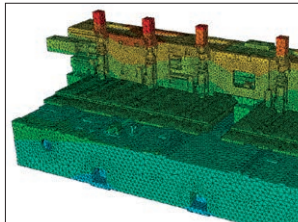
The world's best-selling high-performance PCB drilling machine

High quality and reliability born of Japan-quality advanced technology

The machine's core technology has all been developed in-house over the years. Equipped with Via Mechanics's original CNC system and wealth of applications, this drilling machine achieves the industry's top-level drilling performance, combined with high-speed precision spindles and advanced servo control technology.

A high-level combination of high-speed, high-precision and high-productivity

Comprehensive machine design based on our original servo control technology and precision structural analysis achieving outstanding drilling performance. The ND-Y Series are a global-standard machine offering high-level satisfaction for the technological demands of drilling machines, and with the newly included HSA (High Speed Advanced) functionality, it has achieved production improvements of more than 105%.

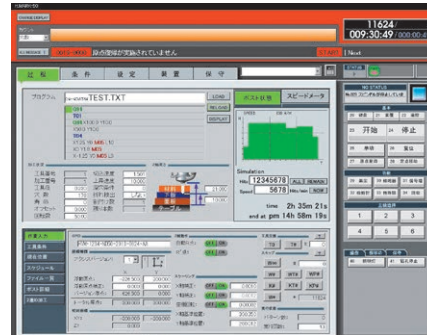


In-depth analysis of chassis stress was fed back into development of more reliable design

Industry leader in energy savings

High-quality of the core machine parts and high-precision control technology have substantially improved production efficiency. 12kVA power requirement and 600L/min air consumption makes ND-6Y220E the industry leader in energy savings.

Via Mechanics CNC: MARK-50D+



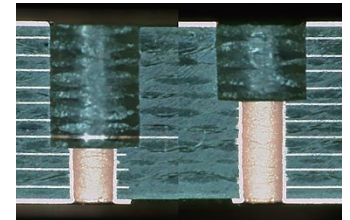
With Enhanced CNC user-friendly and intuitive operation

In-house manufactured spindles H916F and H920E included

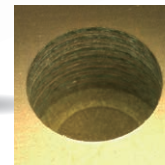
Offering outstanding processing performance together with stability and reliability



Wealth of applications



A wealth of applications such as back-drilling are available

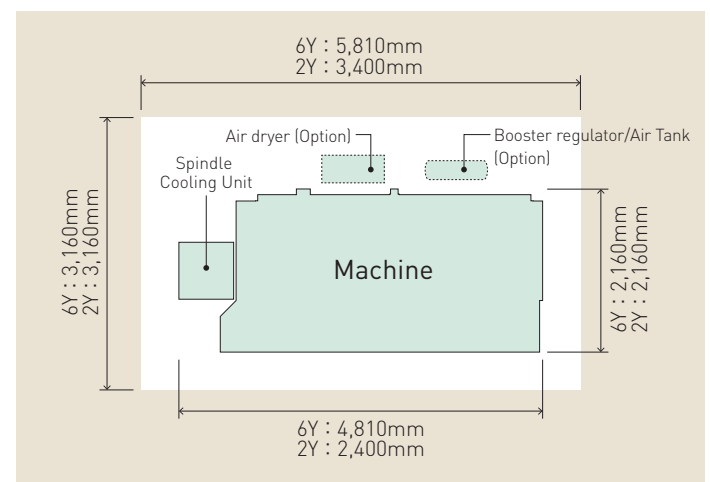


Enlarged view hole made using H916F spindle
Drill dia.: ϕ 6.35mm
Work: t1.6mm, 6layers x 3

Primary specification

Model Number	ND-6Y220E	ND-2Y220E
Number of stations/ Spindle spacing	6spindles/560mm (22.0inch)	2spindles/560mm (22.0inch)
Max. Drilling area	660 x 560mm (26.0 x 22.0 inch)	725 x 560mm (28.5 x 22.0 inch)
Spindle	H916F	15~160 krpm
	H920E	20~200 krpm
Drill diameter	ϕ 0.1~6.35mm	
Number of ADC	300kinds 300tools/spindle	
XY axis feed rate	60m/min	
Z axis feed rate	0.101~12.7m/min	
X,Y Positioning accuracy	\pm 0.004mm	
Drilling accuracy	\pm 0.015mm	
CNC	MARK-50D+	

Floor Plan



Via Mechanics, Ltd.

Headquarters: 2100, Kami-Imaizumi, Ebina City, Kanagawa Prefecture, 243-0488 Japan
Tel. +81-46-231-7111 Fax. +81-46-235-9356
<http://www.viamechanics.com>

